



RAILINC

North American Railcar Review

November 10, 2016

David Humphrey, PhD

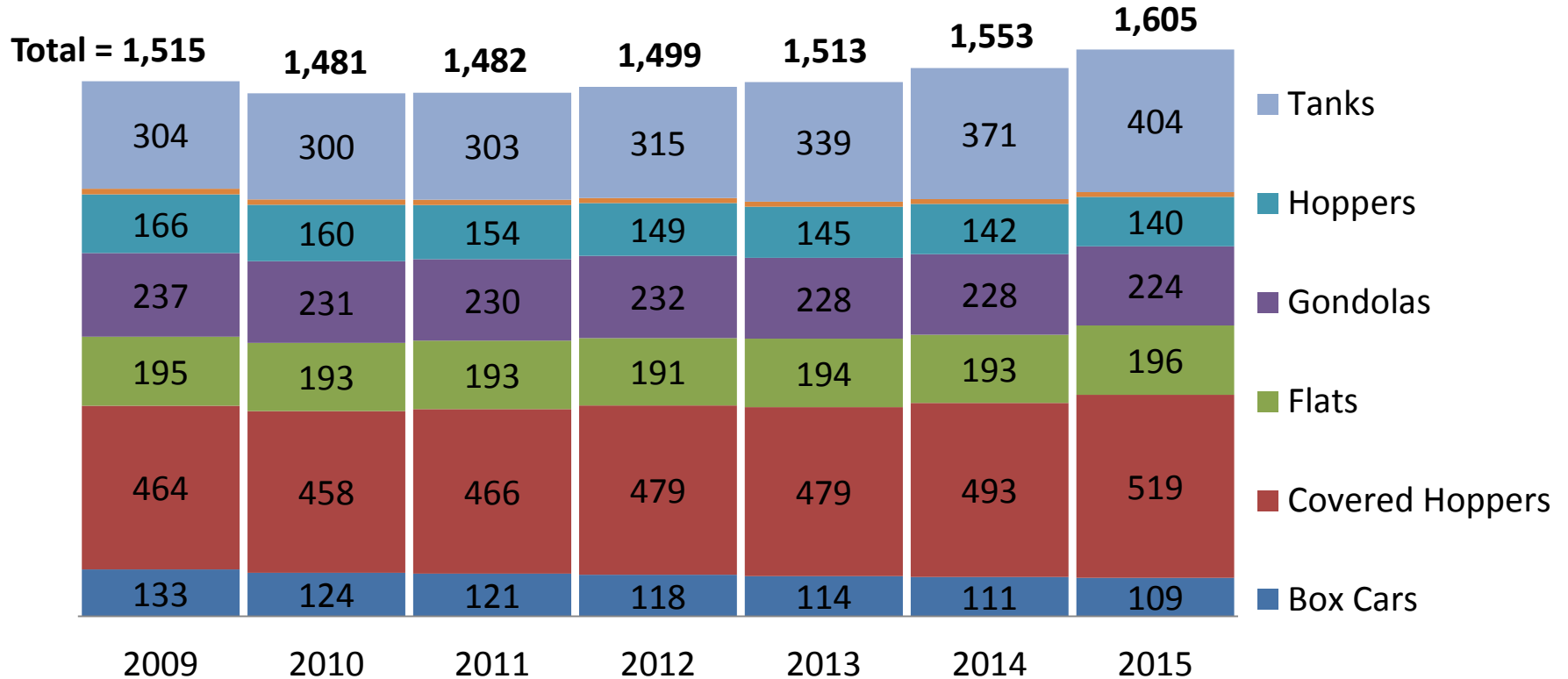
Senior Analyst

919-651-5267

david.humphrey@railinc.com

North American Freight Car Fleet, by Group

(Counts at year end, shown in thousands)



North American Railcar Review

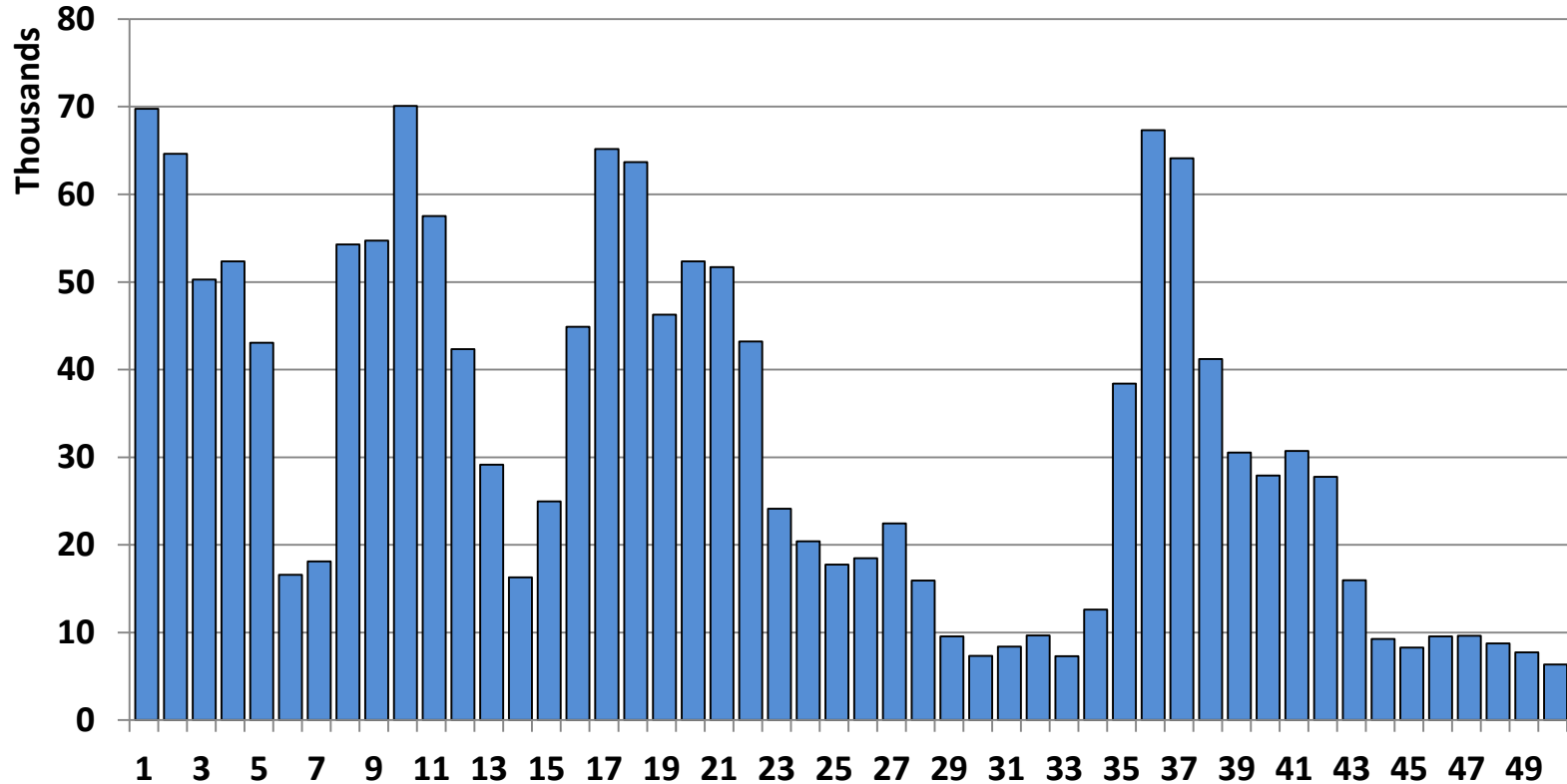
- **Age Demographics**
- **Detailed Fleet Overview**
 - Covered Hoppers: Small, Medium, Large, Jumbo
 - Tanks: Small, Medium, Large
 - Gondolas: GT, Non-GT
 - Open Hoppers: Equipped, Unequipped
 - Boxes: Small, Large, Domestic Intermodal Containers
- **Intermodal Flats**
- **Capacity Trends**

Focus on GRL & ETC1 Values

- **Gross Rail Load/Weight (GRL)**
- **GRL Values of 220, 263, 268, and 286 (000 pounds)**
- **Equipment Classified by ETC1**
 - First character of Equipment Type Code

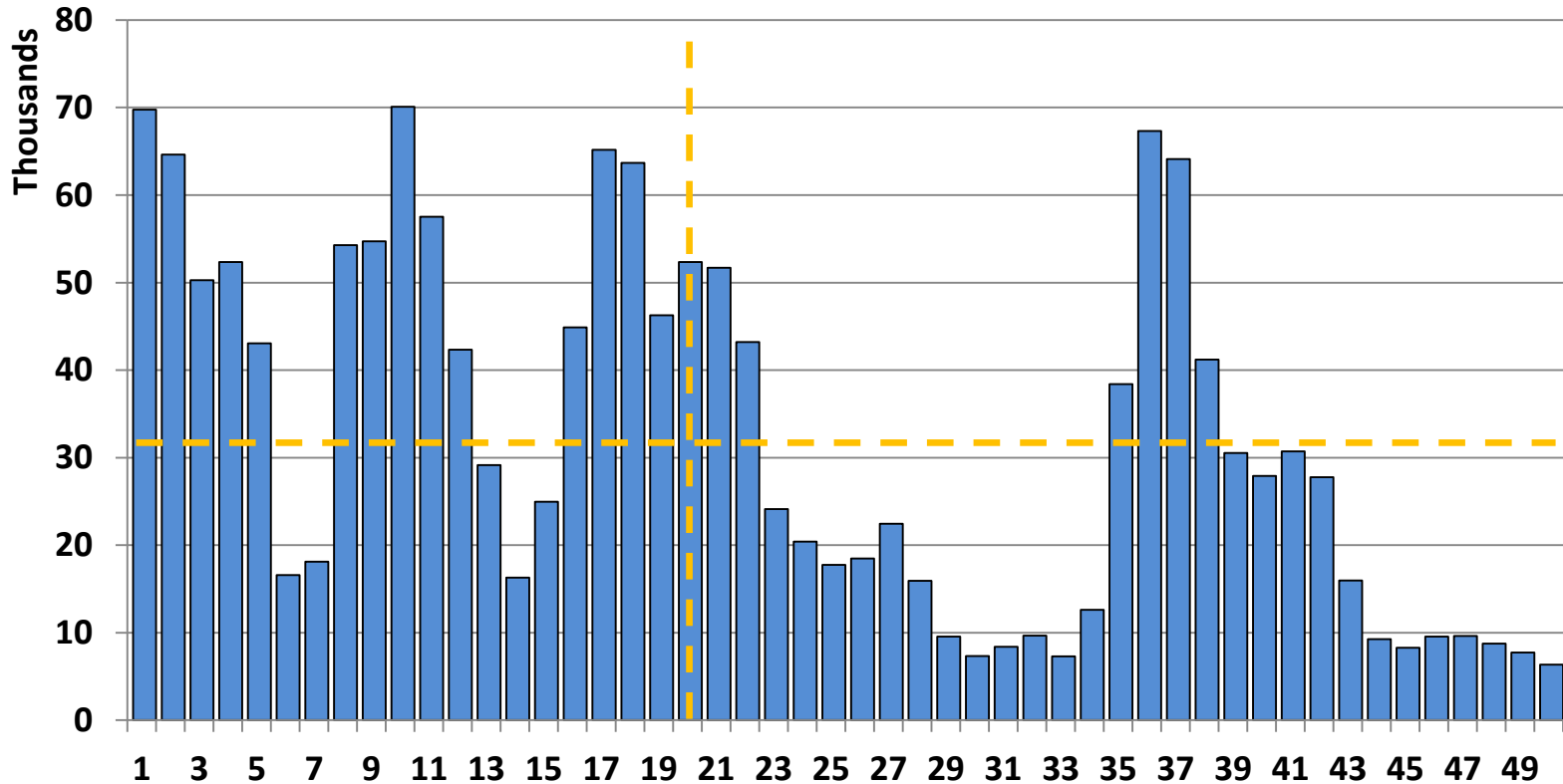
North American Freight Car Fleet

Number of Cars by Age (Revenue-Earning Fleet)



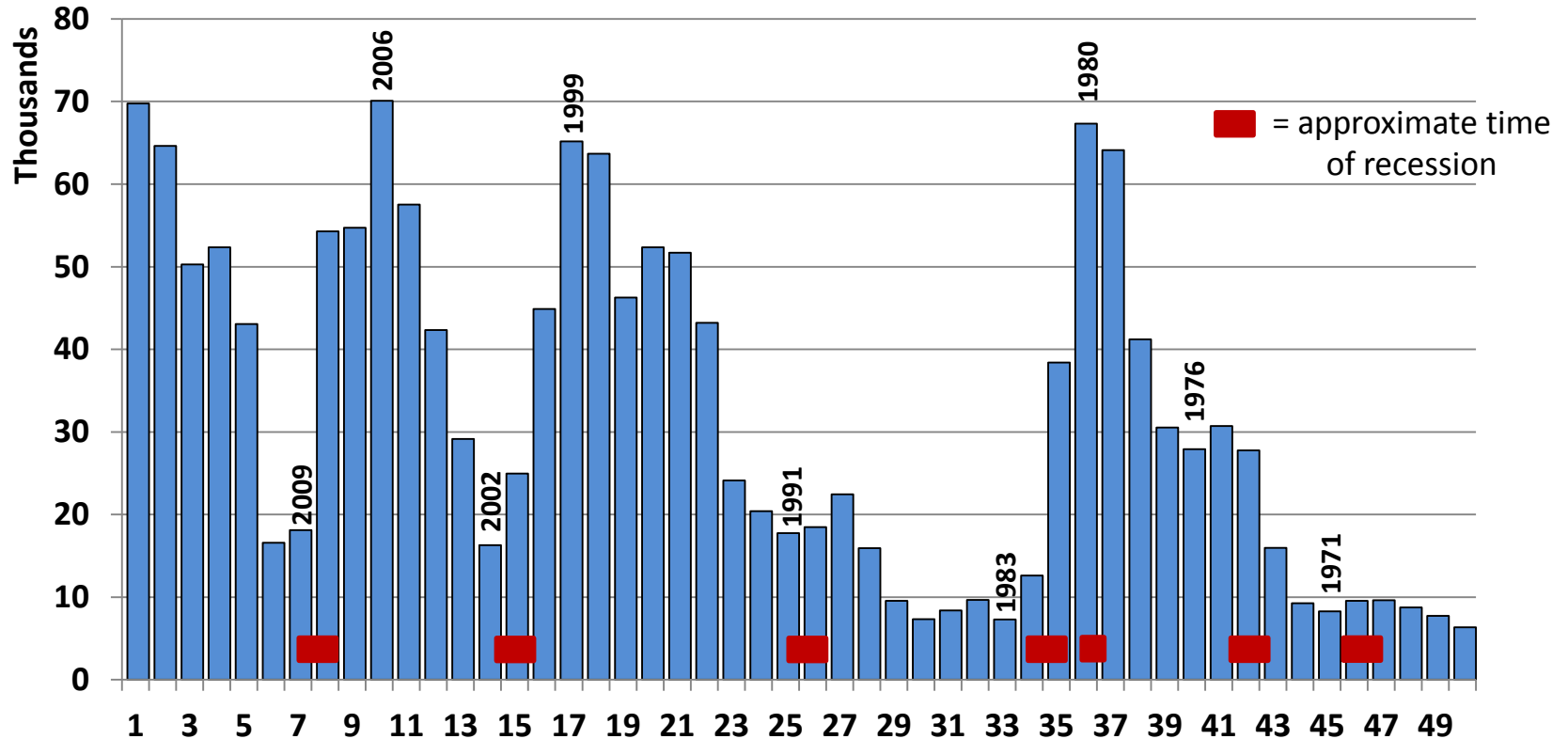
North American Freight Car Fleet

Number of Cars by Age (Revenue-Earning Fleet)



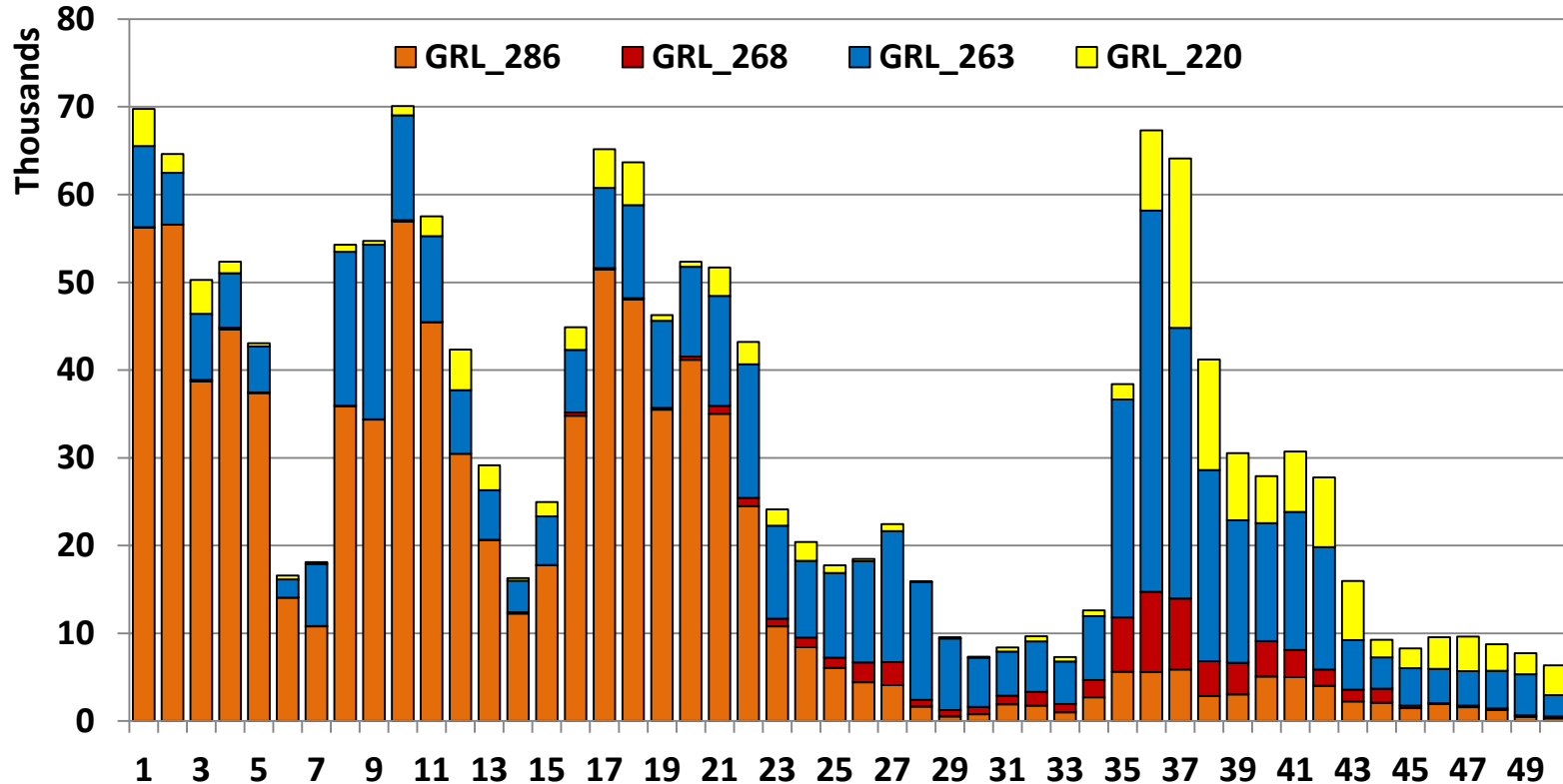
North American Freight Car Fleet

Number of Cars by Age (Revenue-Earning Fleet)



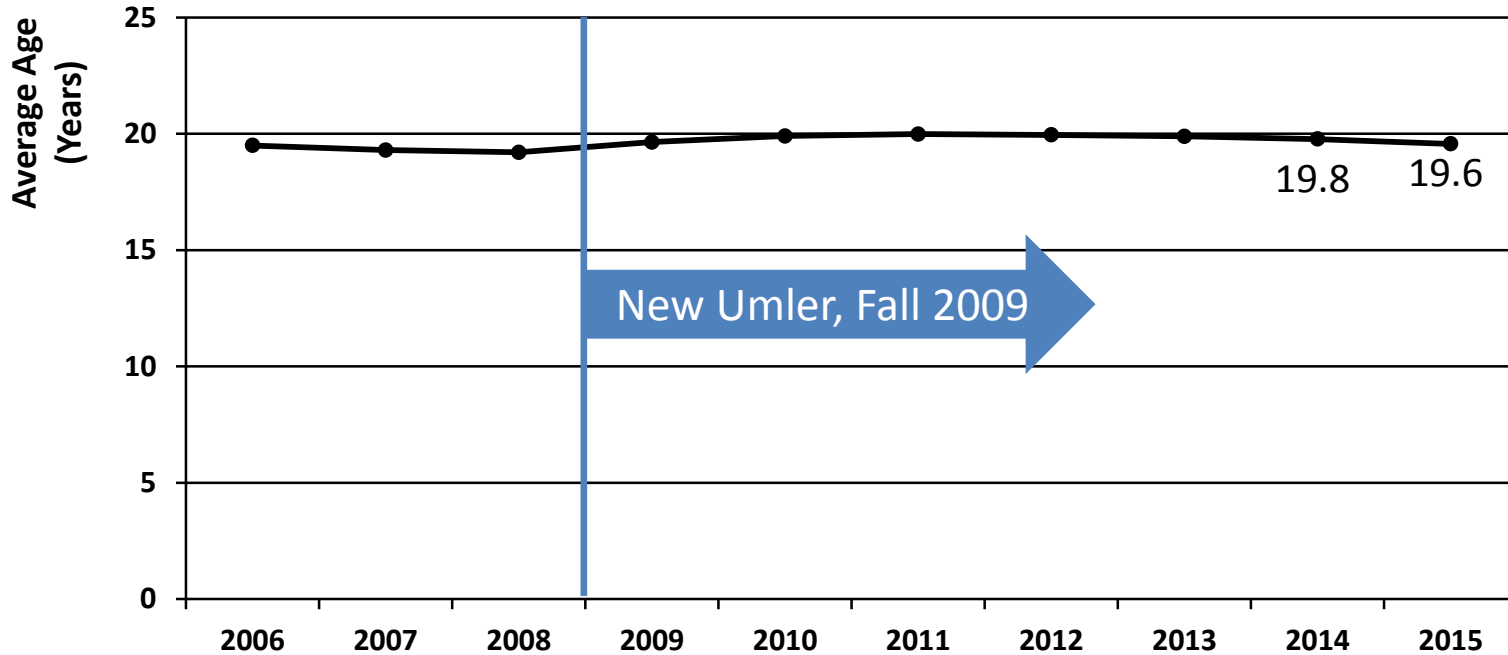
North American Freight Car Fleet

Number of Cars by Age and GRL (Revenue-Earning Fleet)



North American Freight Car Fleet

Average Age at End of Year



North American Freight Car Fleet

Top 10 ETCs in Revenue-Earning Fleet

Rank	Change	ETC	Count	Description
1	↑ 1	C114	126K	CH – Large
2	↓ 1	C113	125K	CH – Medium
3	↑ 1	C214	109K	CH – Large
4	↓ 1	J311	105K	Coal Gondola
5		C112	102K	CH – Small
6		T108	91K	Tank – Large
7		T106	49K	Tank – Medium
8		T107	45K	Tank – Medium
9	↑ 2	T389	45K	Tank – Large
10		T104	41K	Tank – Small

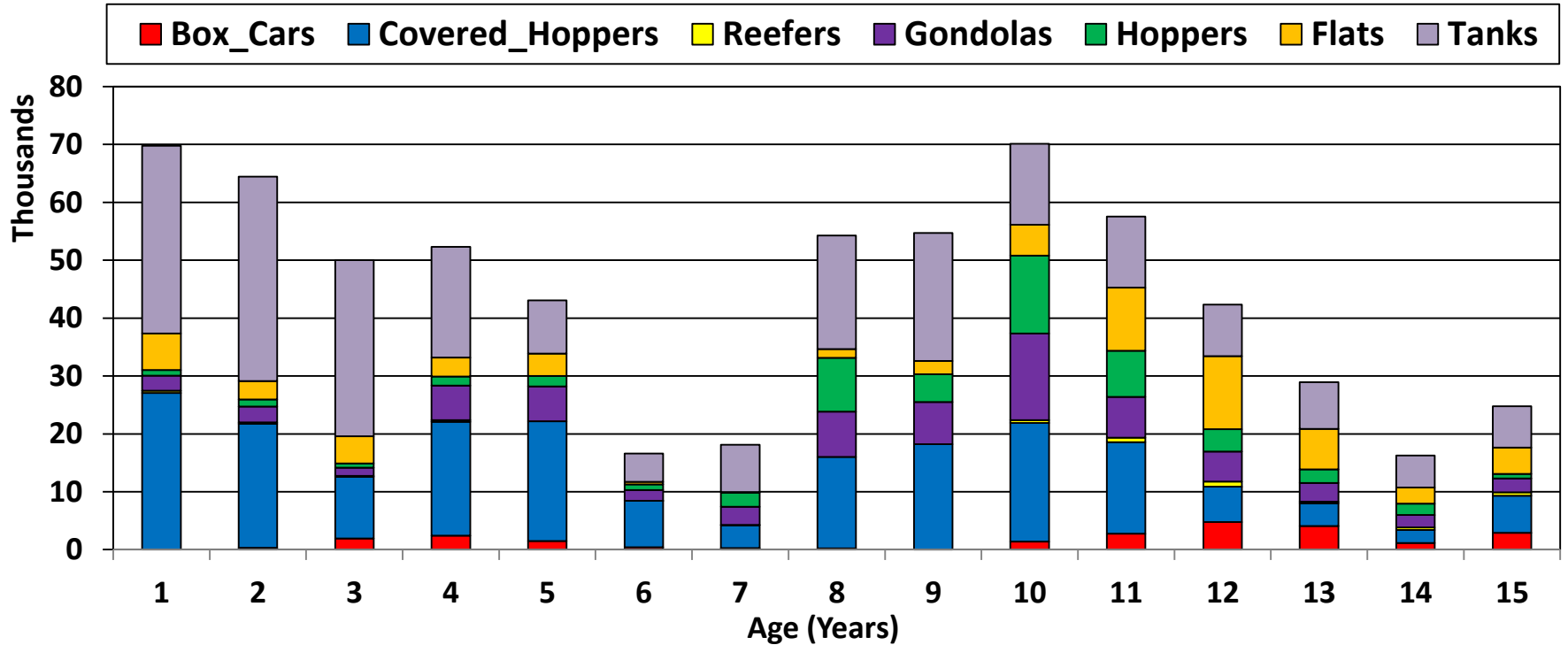
These 10 ETCs now represent 52% of the revenue-earning fleet.

Over 700 ETCs are present.

K341 fell from Top 10.

North American Freight Car Fleet

Cars by Age and Type

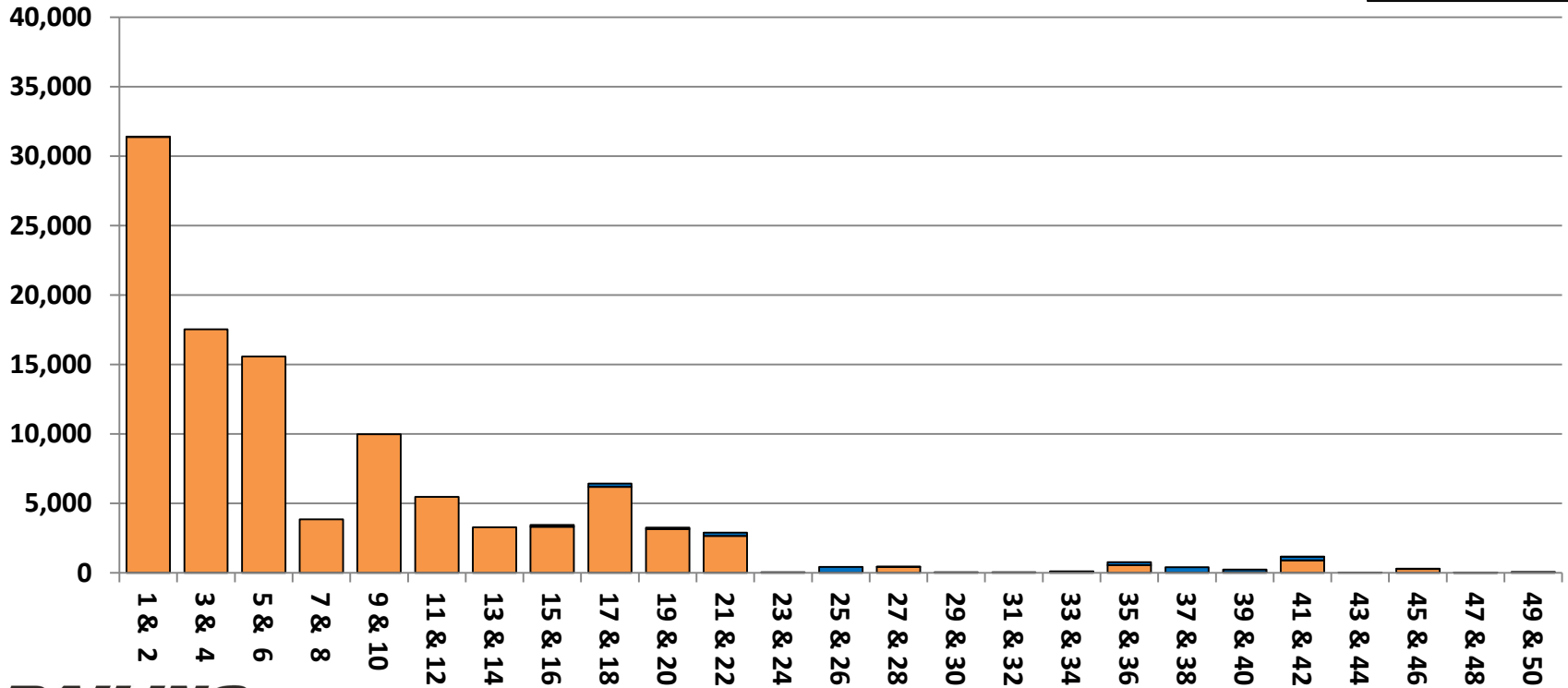


Small Covered Hoppers (Up to 4K ft³)

Age Distribution by GRL (Revenue-Earning Fleet)

GRL_286 GRL_268 GRL_263 GRL_220

ETC1 = C
7% of Fleet

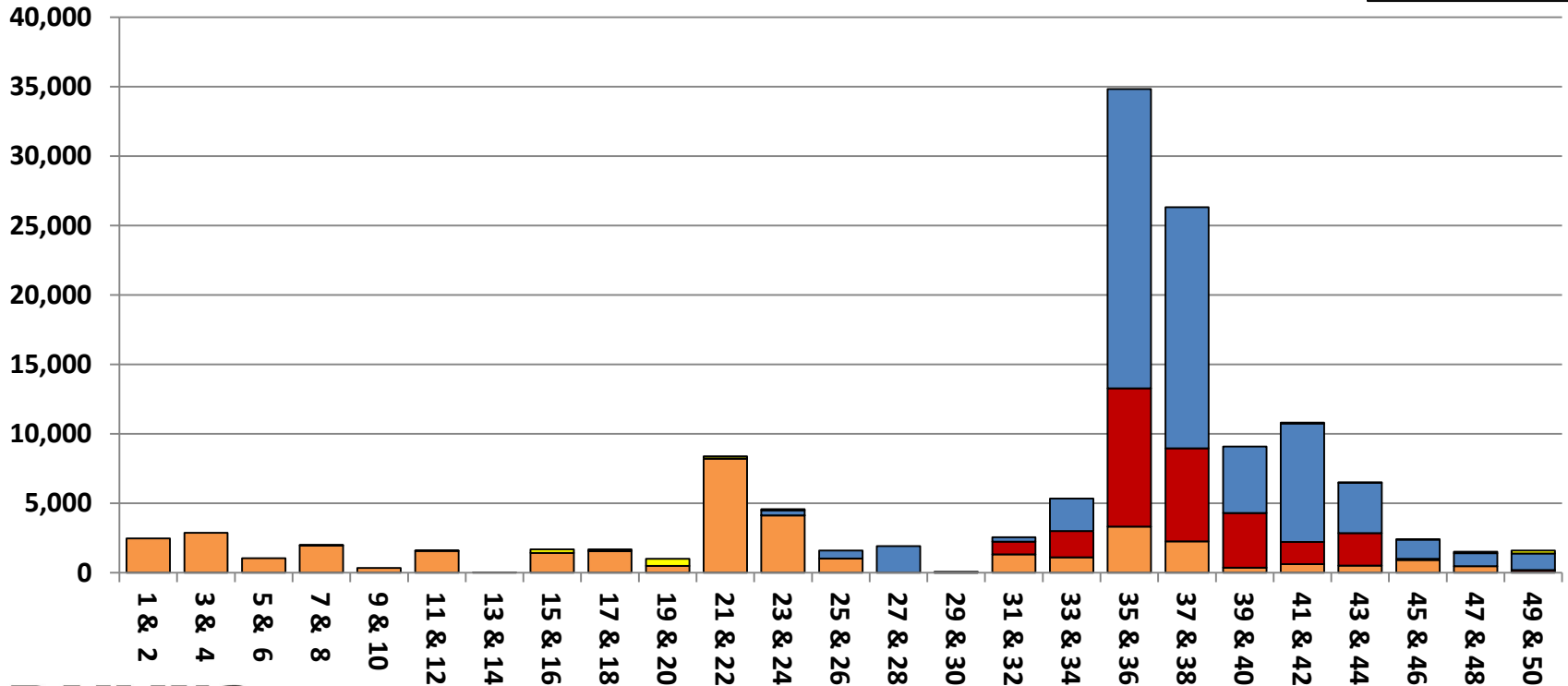


Medium Covered Hoppers (4K – 5K ft³)

Age Distribution by GRL (Revenue-Earning Fleet)

GRL_286 GRL_268 GRL_263 GRL_220

ETC1 = C
8% of Fleet

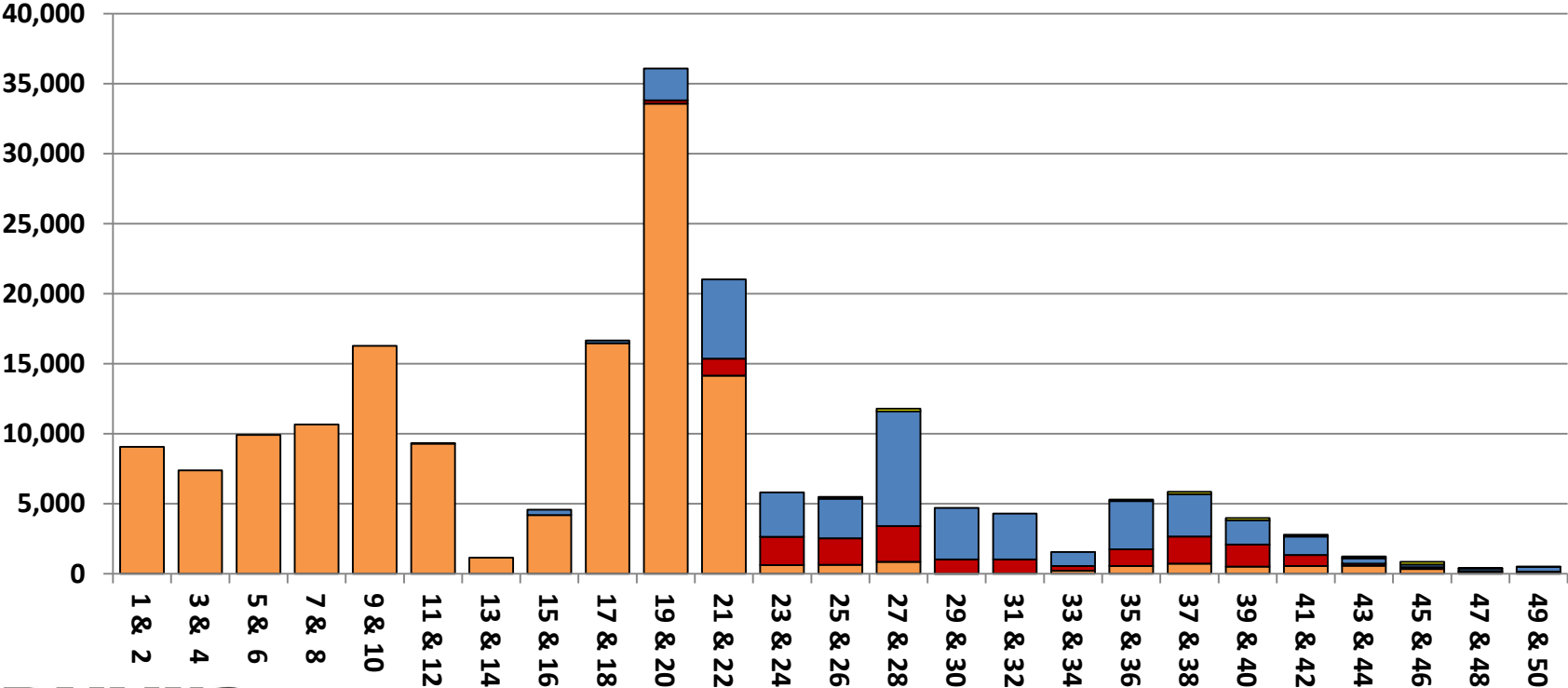


Large Covered Hoppers (5K – 6K ft³)

Age Distribution by GRL (Revenue-Earning Fleet)

GRL_286 GRL_268 GRL_263 GRL_220

ETC1 = C
12% of Fleet

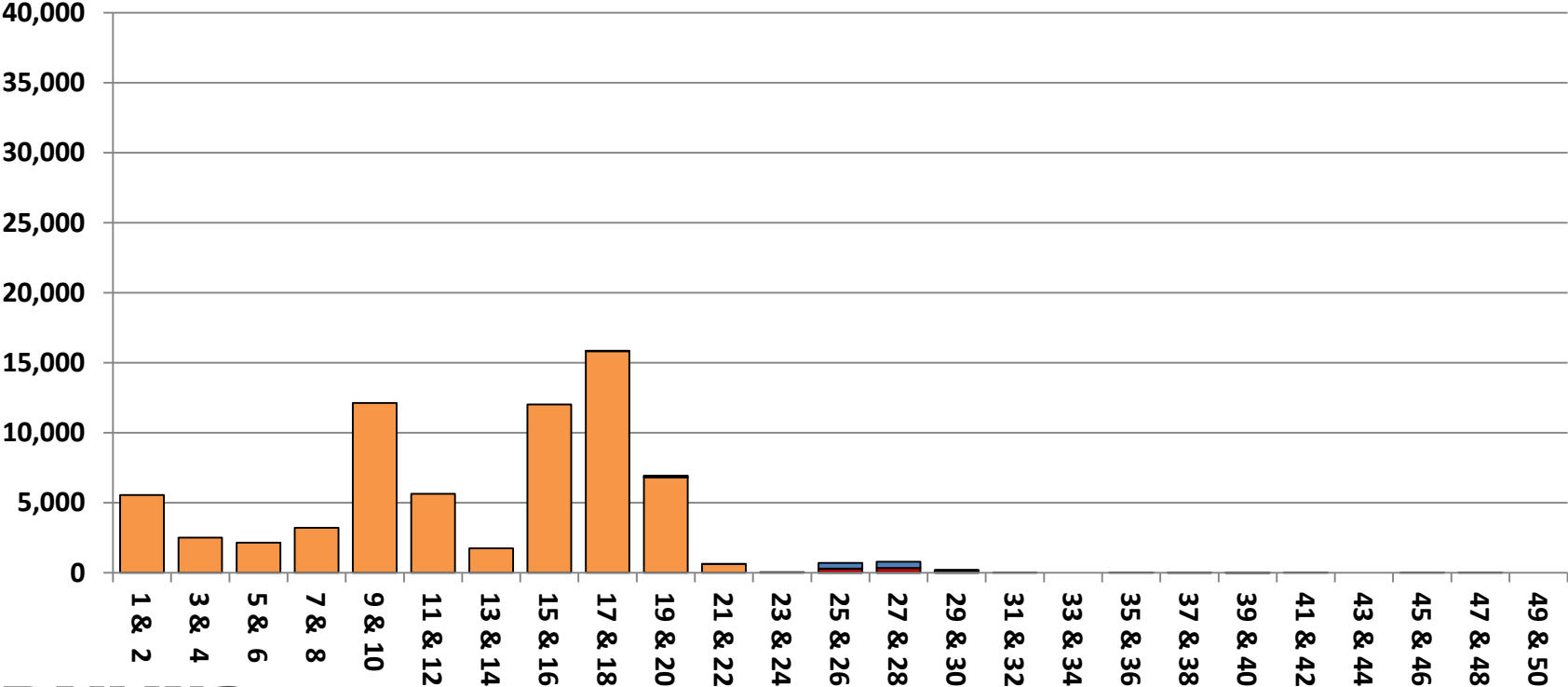


Jumbo Covered Hoppers (6K ft³ and Over)

Age Distribution by GRL (Revenue-Earning Fleet)

GRL_286 GRL_268 GRL_263 GRL_220

ETC1 = C
4% of Fleet

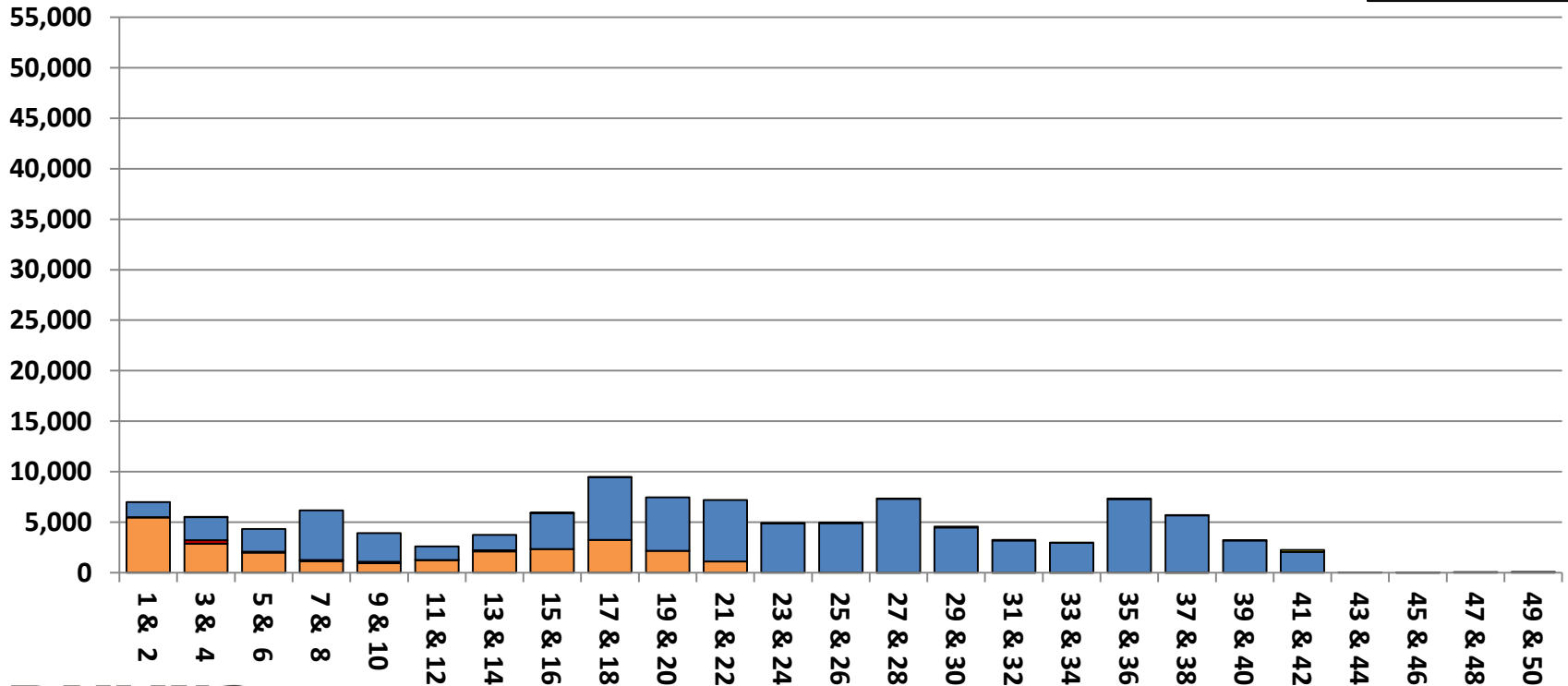


Small Tanks (under 22.5K Gallons)

Age Distribution by GRL (Revenue-Earning Fleet)

GRL_286 GRL_268 GRL_263 GRL_220

ETC1 = T
7% of Fleet

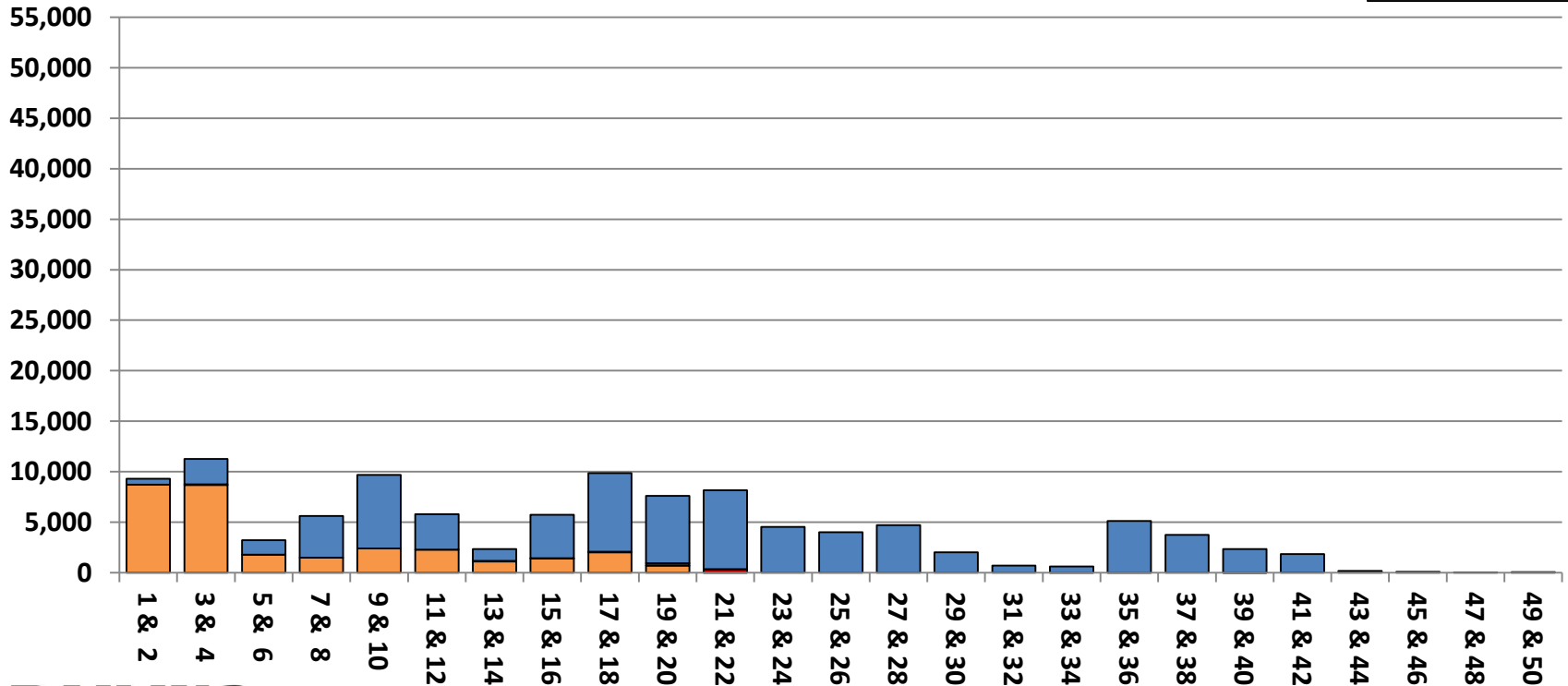


Medium Tanks (22.5K – 27.5K Gallons)

Age Distribution by GRL (Revenue-Earning Fleet)

GRL_286 GRL_268 GRL_263 GRL_220

ETC1 = T
7% of Fleet

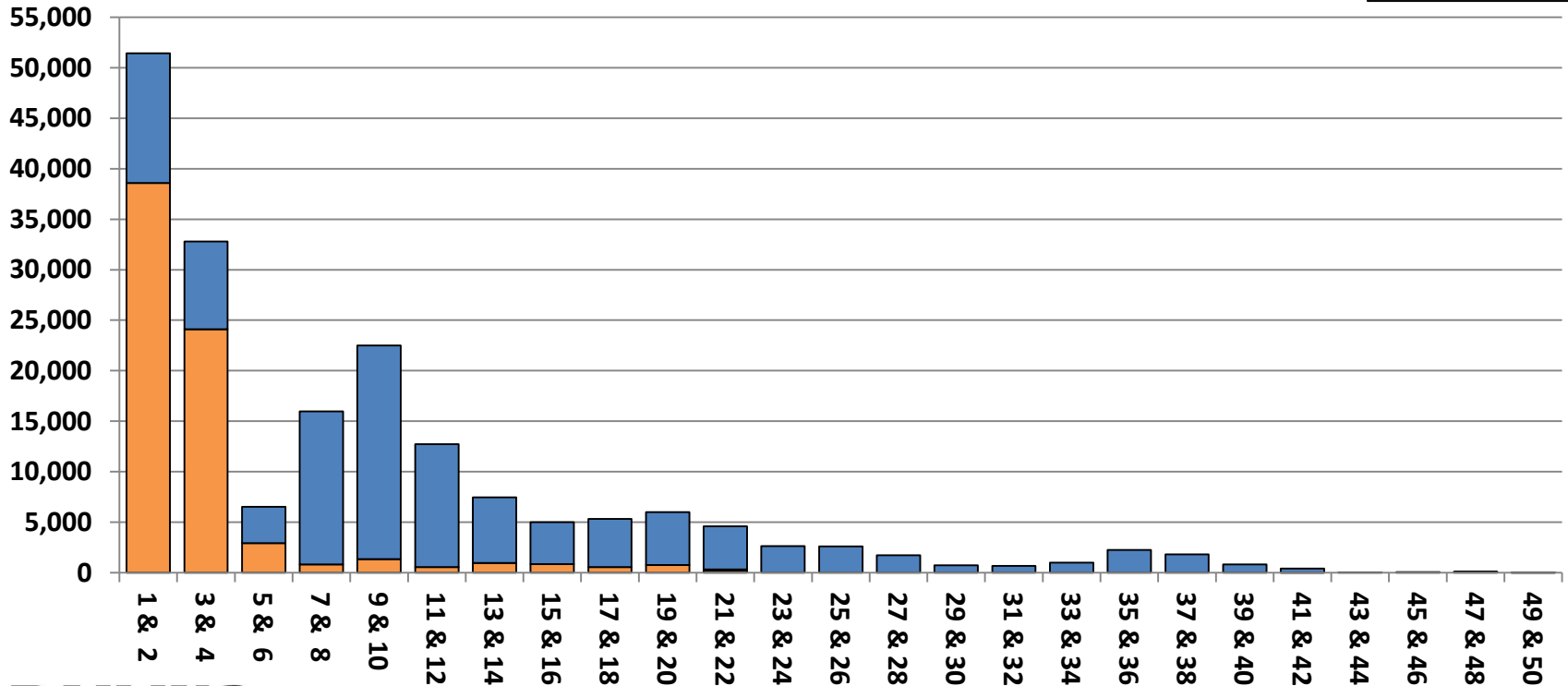


Large Tanks (27.5K Gallons and Over)

Age Distribution by GRL (Revenue-Earning Fleet)

GRL_286 GRL_268 GRL_263 GRL_220

ETC1 = T
12% of Fleet

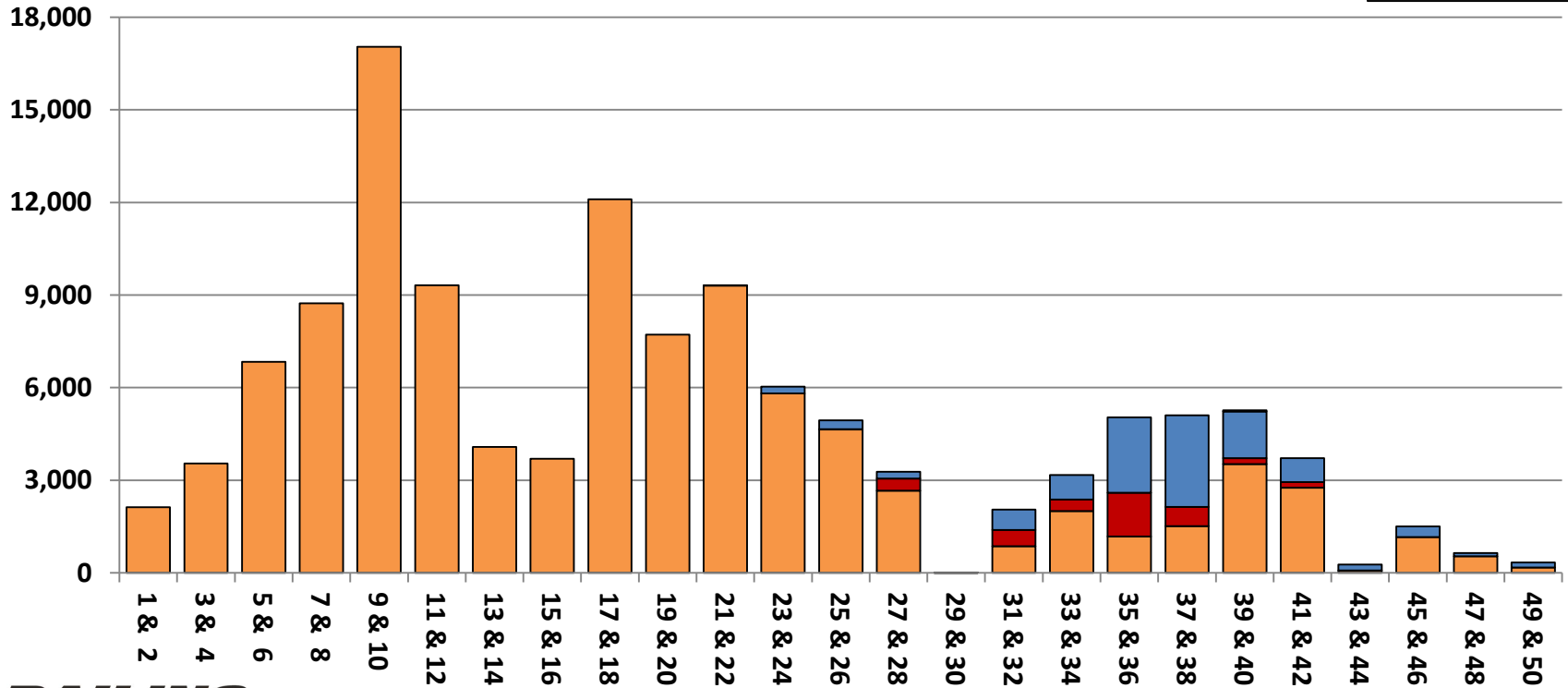


GT Gondolas

Age Distribution by GRL (Revenue-Earning Fleet)

GRL_286 GRL_268 GRL_263 GRL_220

ETC1 = J
8% of Fleet

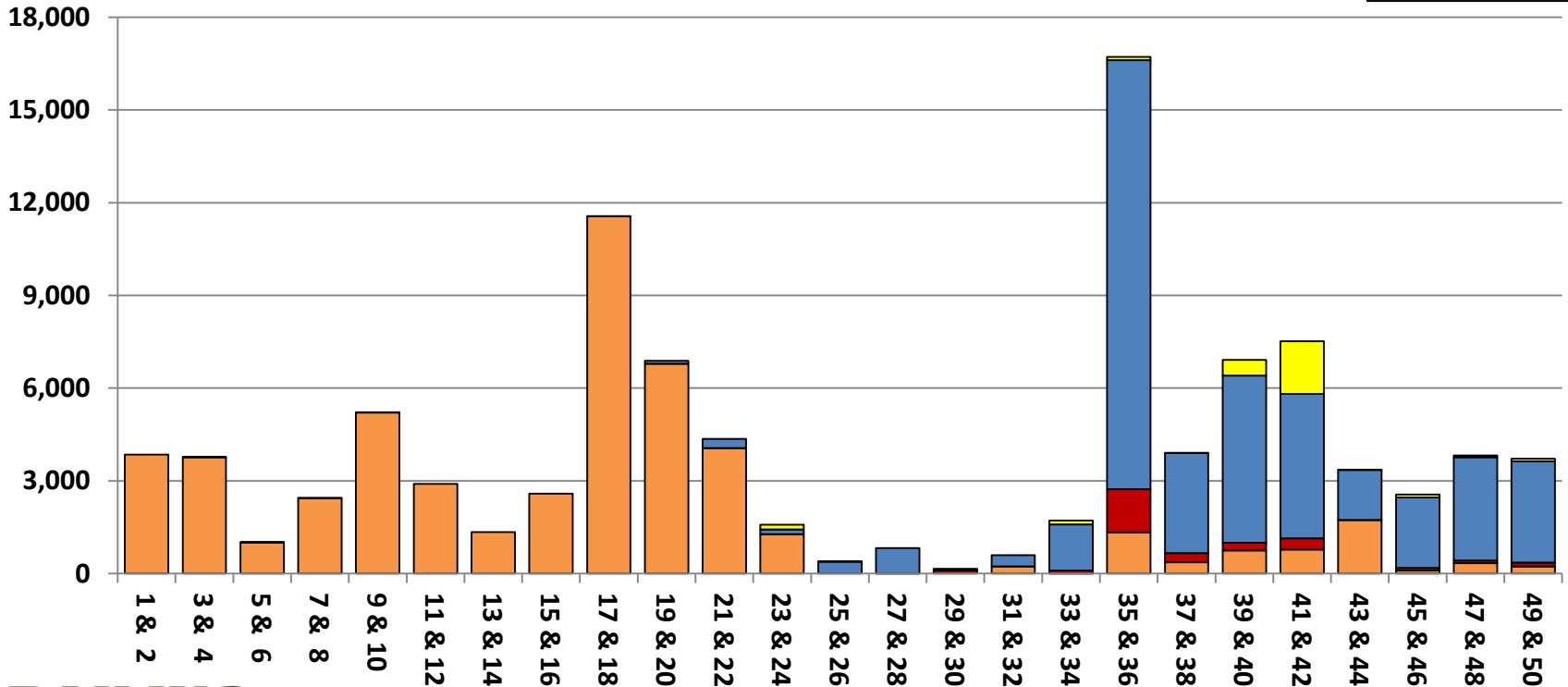


Non-GT Gondolas

Age Distribution by GRL (Revenue-Earning Fleet)

GRL_286 GRL_268 GRL_263 GRL_220

ETC1 = E and G
6% of Fleet

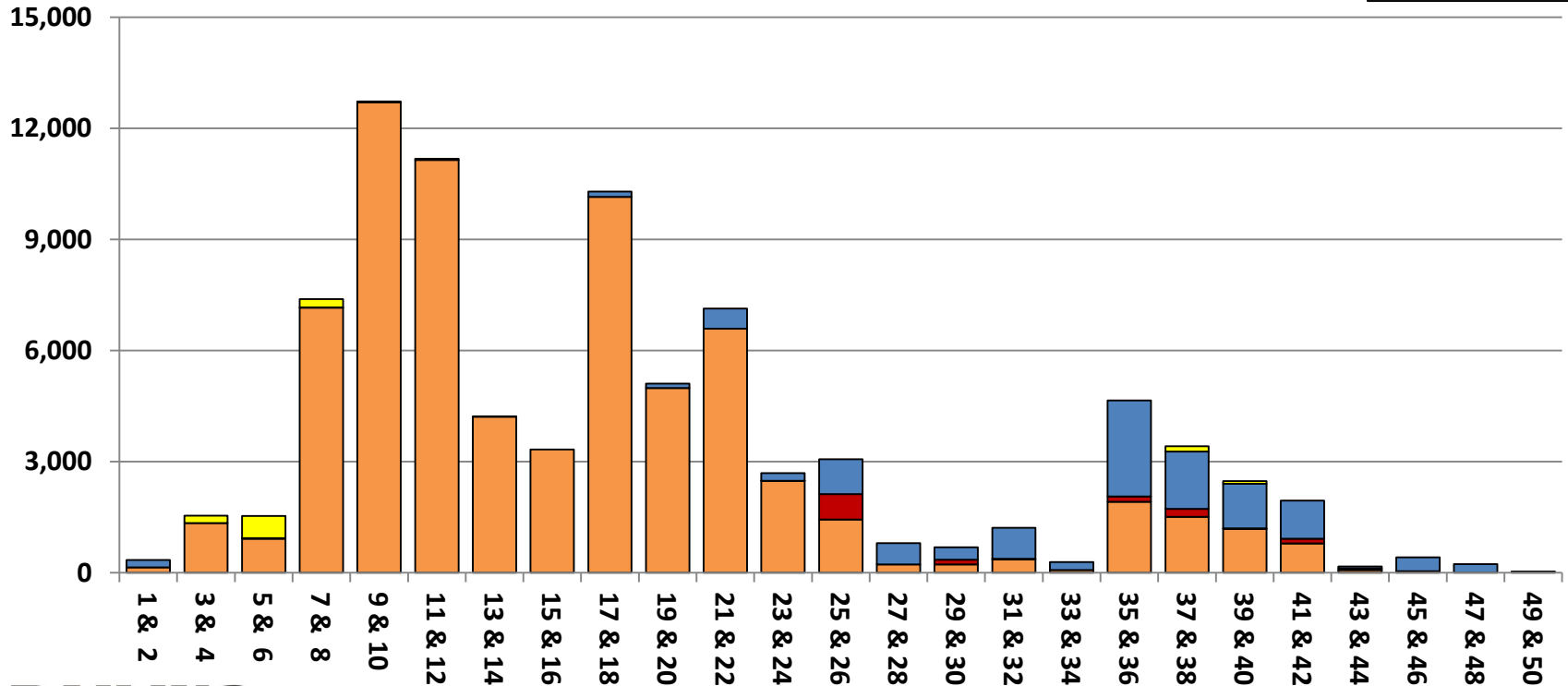


Equipped Open Hoppers

Age Distribution by GRL (Revenue-Earning Fleet)

GRL_286 GRL_268 GRL_263 GRL_220

ETC1 = K
5% of Fleet

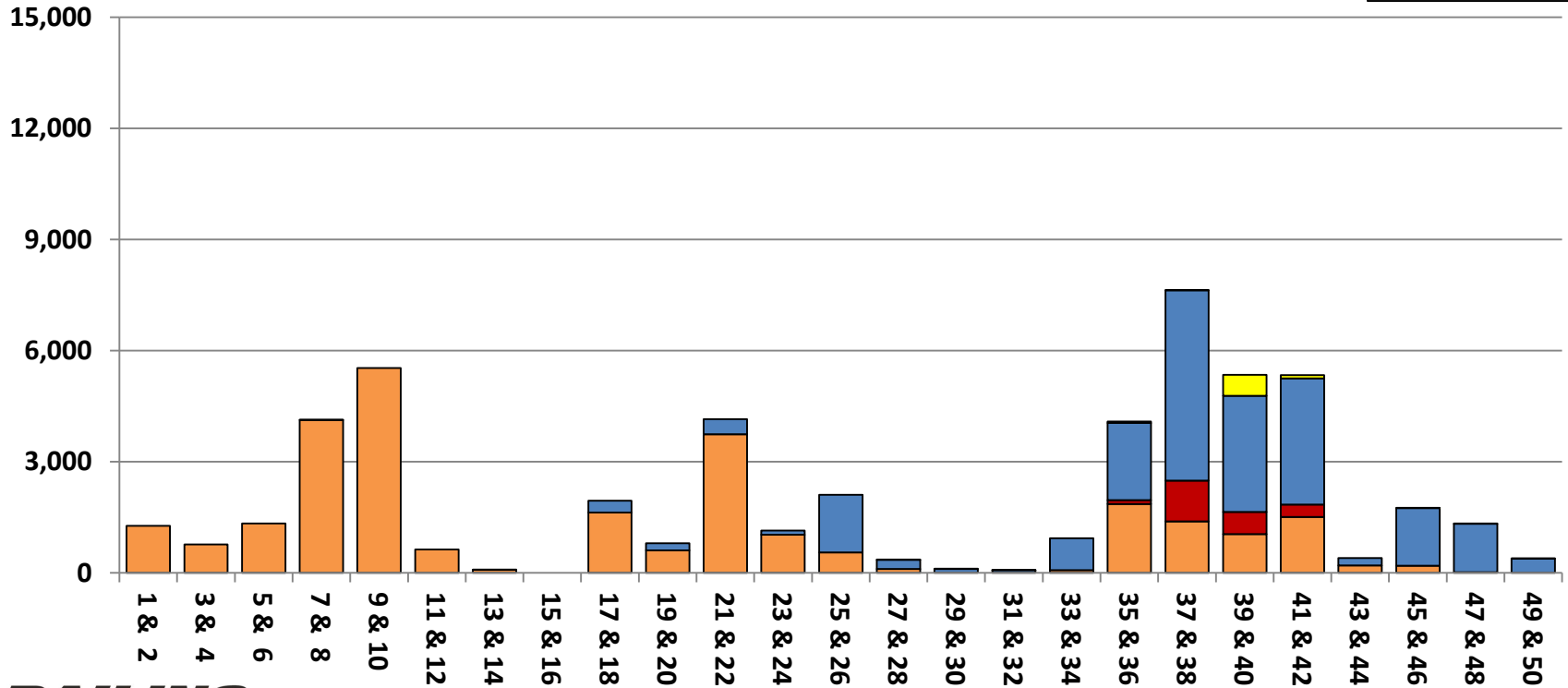


Unequipped Open Hoppers

Age Distribution by GRL (Revenue-Earning Fleet)

GRL_286 GRL_268 GRL_263 GRL_220

ETC1 = H
3% of Fleet

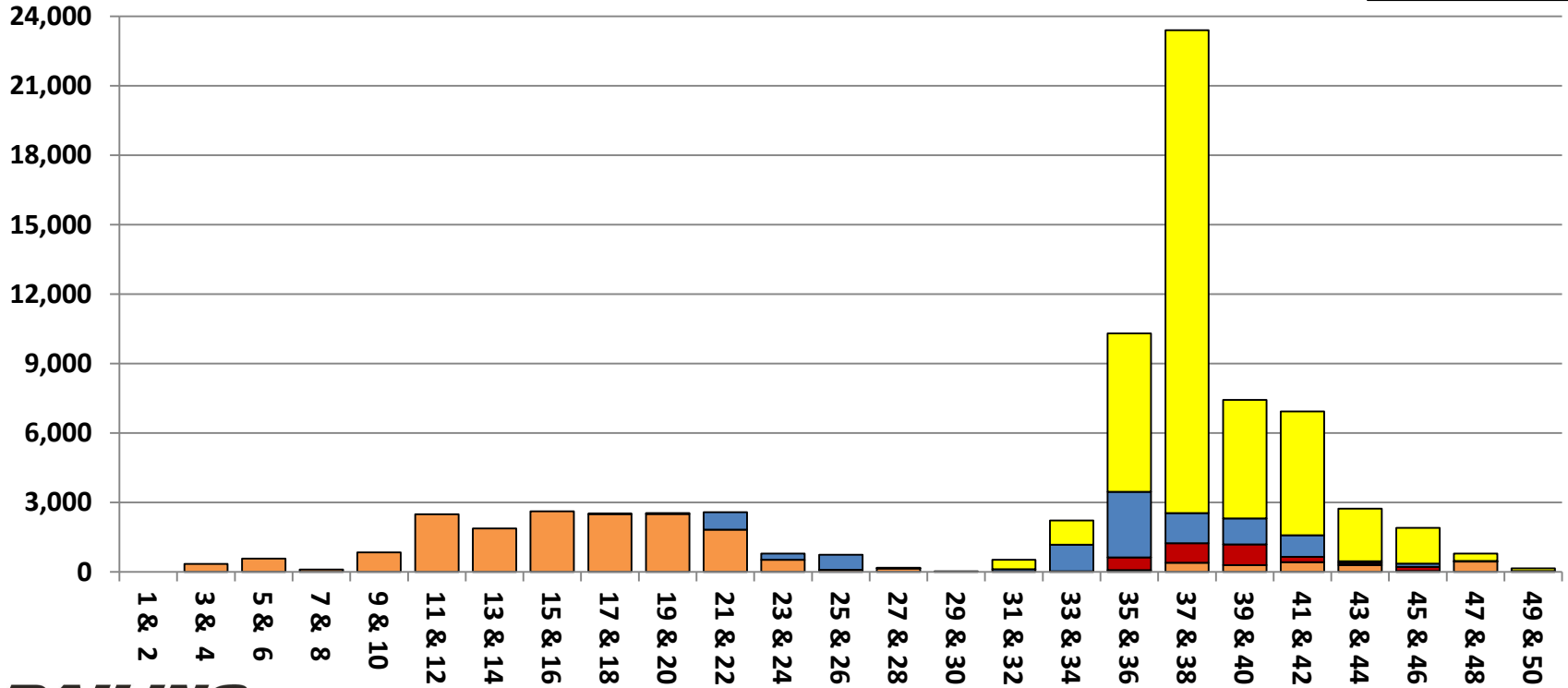


Small Boxcars (Up to 55 Feet)

Age Distribution by GRL (Revenue-Earning Fleet)

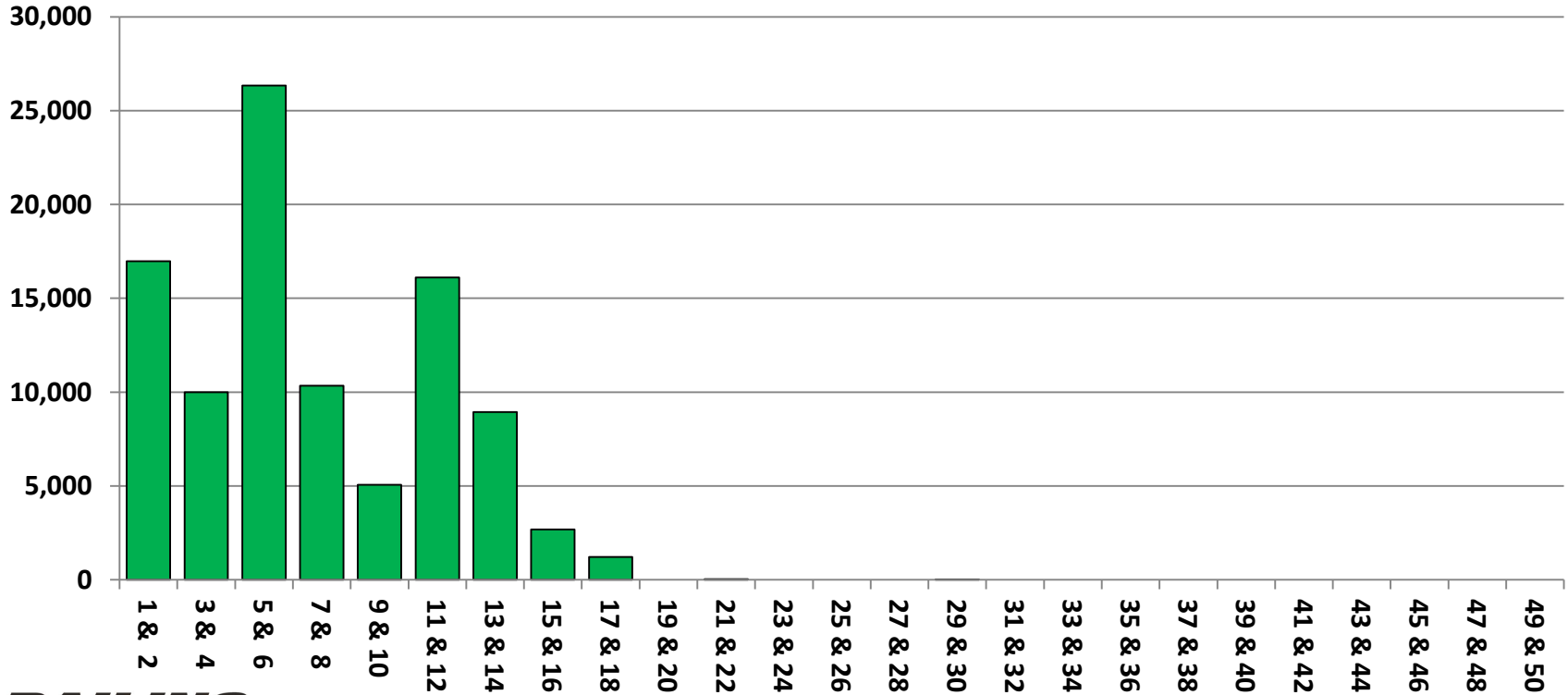
GRL_286 GRL_268 GRL_263 GRL_220

ETC1 = A and B
5% of Fleet



Domestic Intermodal Containers

53' Containers Registered in Umler

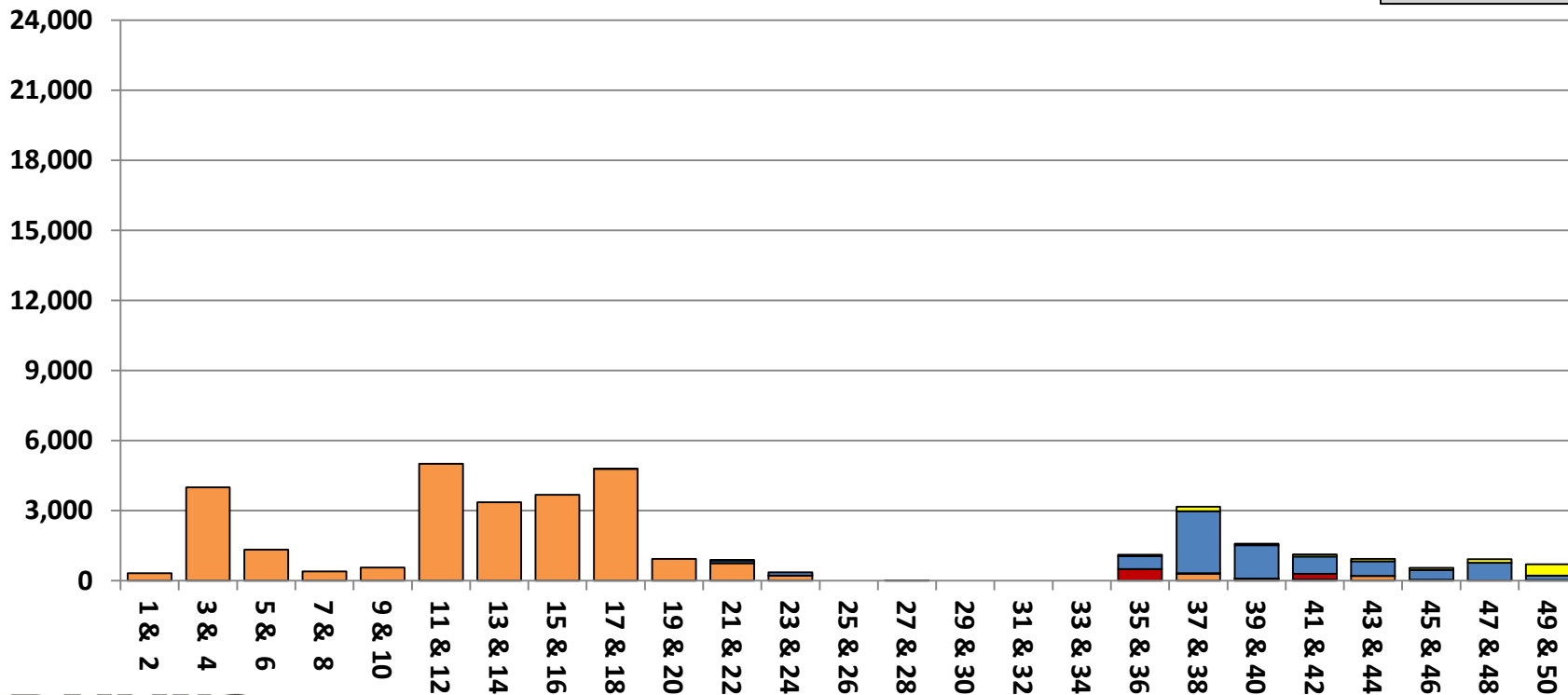


Large Boxcars (Over 55 Feet)

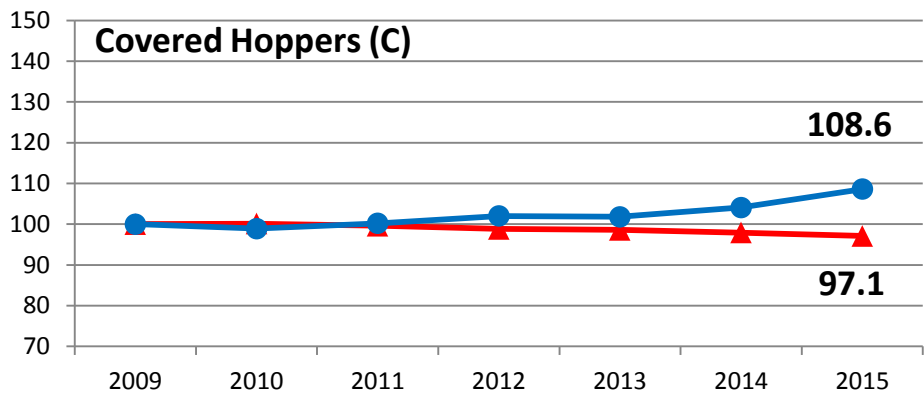
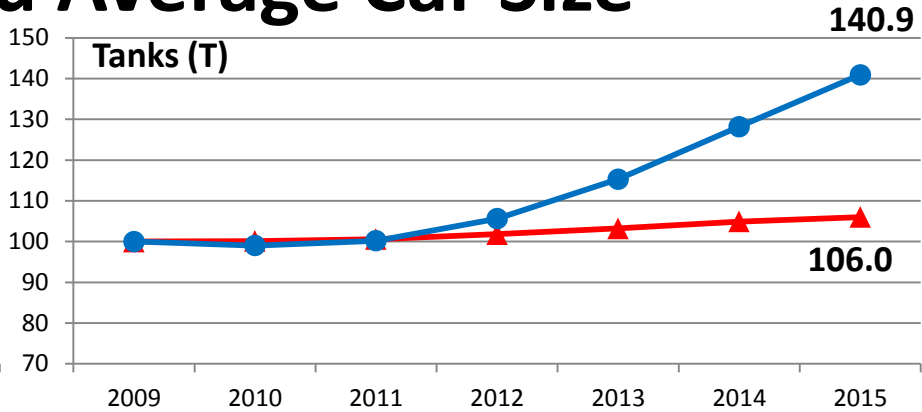
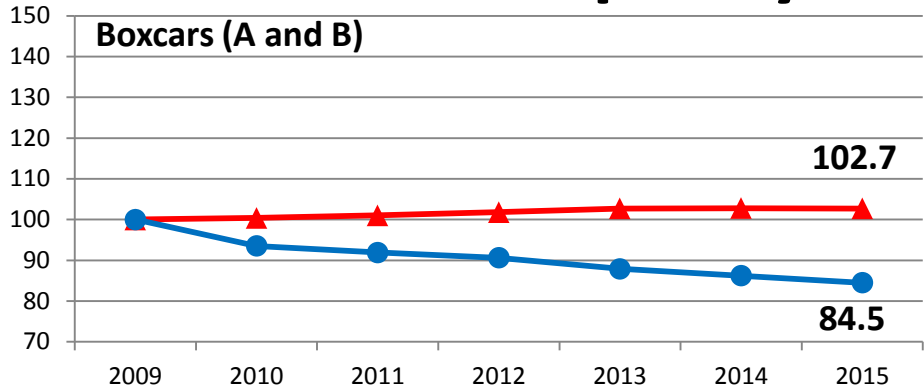
Age Distribution by GRL (Revenue-Earning Fleet)

GRL_286 GRL_268 GRL_263 GRL_220

ETC1 = A and B
2% of Fleet

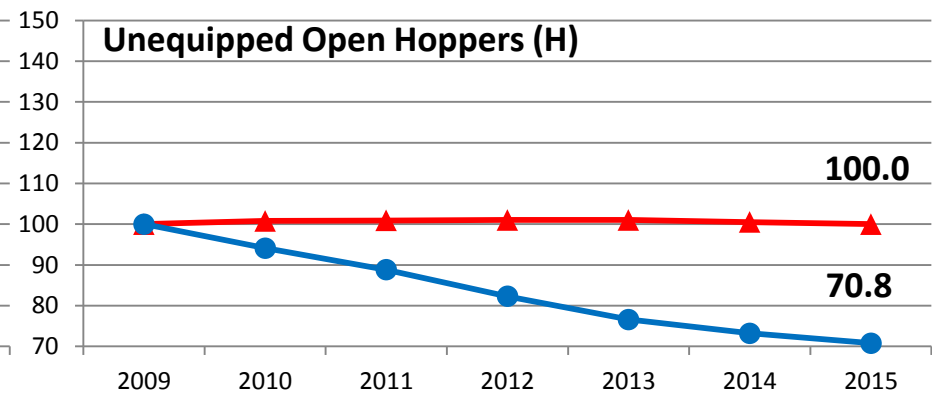
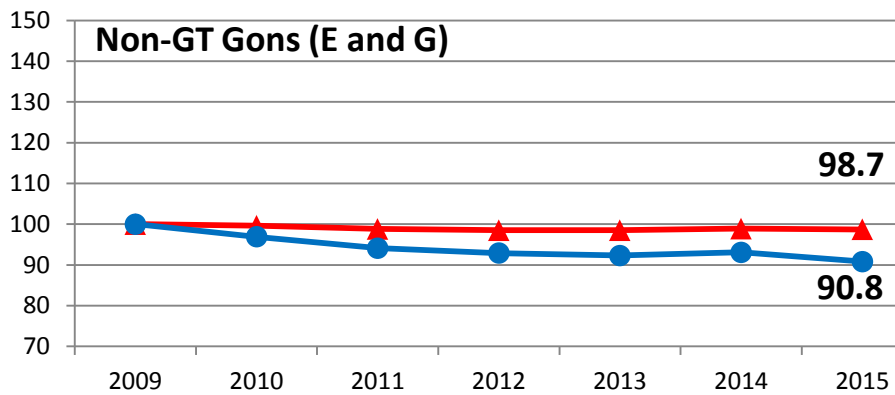
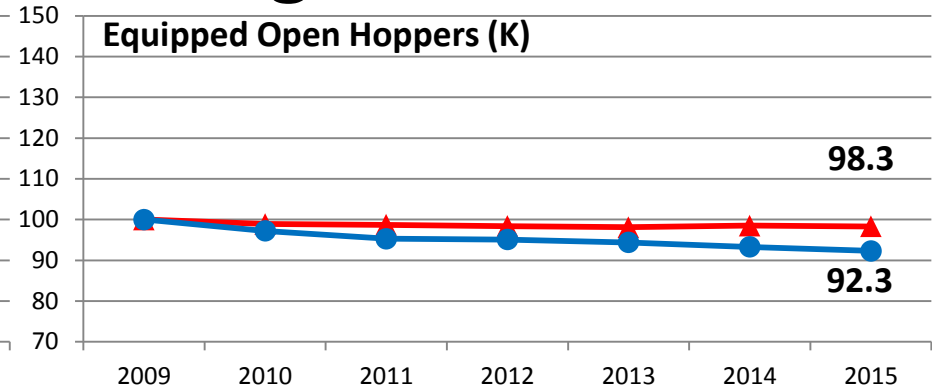
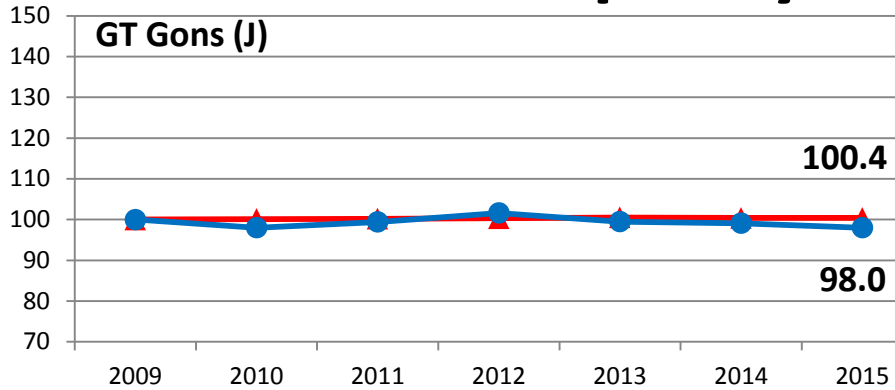


Fleet Capacity and Average Car Size



- **Blue:** Total Fleet Capacity
- **Red:** Average Car Size (gal or ft³)
- **Index:** 2009 = 100

Fleet Capacity and Average Car Size



To learn more, connect with Railinc.

Railinc Corp.

7001 Weston Parkway, Suite 200

Cary, N.C. 27513

www.railinc.com

Railinc Customer Support

24x7x365 coverage

(877) RAILINC or csc@railinc.com