



## ***CSX Intermodal Terminals Savannah, GA***

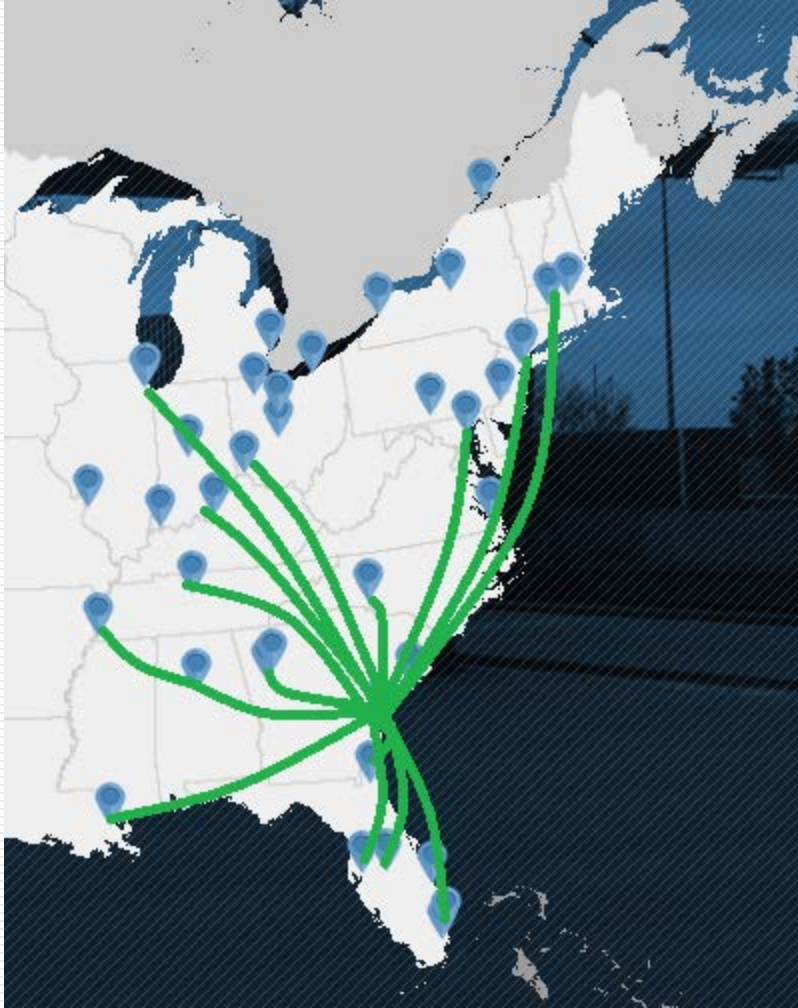


# CSX Intermodal Terminals Network



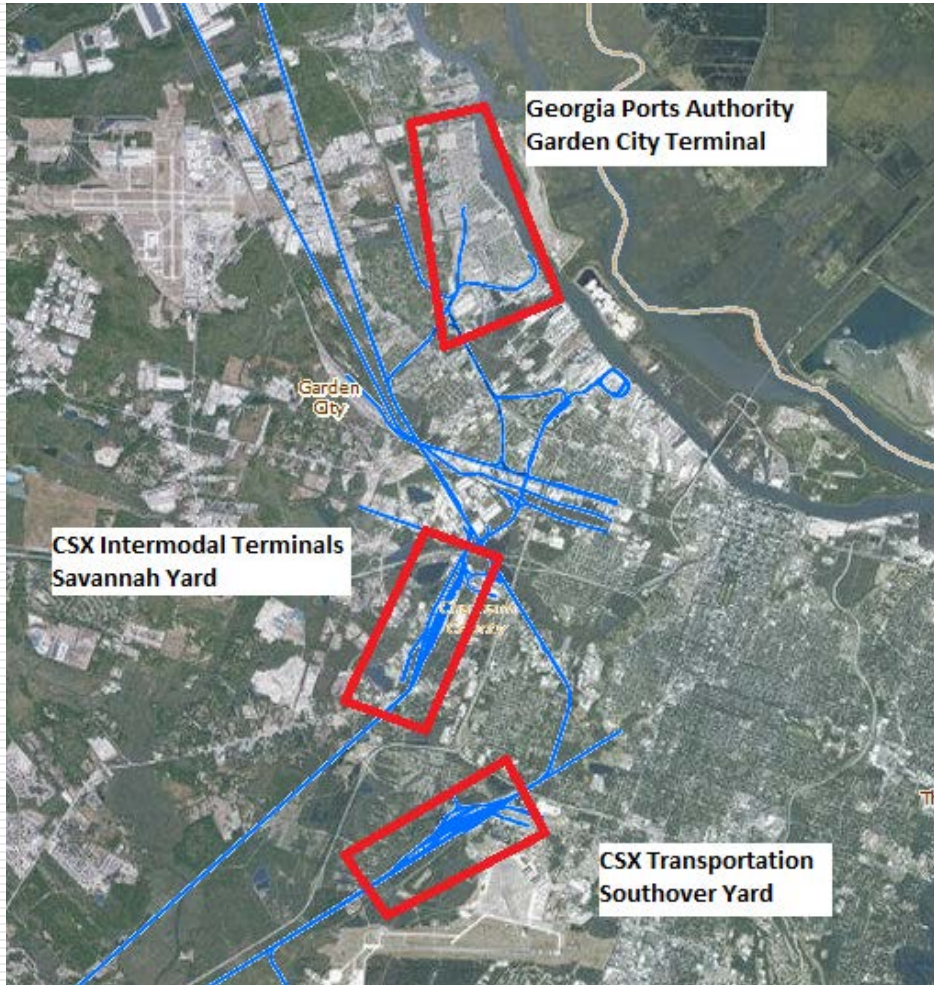
- 35 Terminals in 18 States, plus Montreal, PQ.
- Served by CSX Transportation
- Interchange to Western Rails and all major ports on the US East Coast

# CSX Intermodal Terminals Savannah Service



- Eleven trains per day
- Regional Hub, connecting Charleston, Memphis, Nashville, Bessemer with Florida, US Northeast, Ohio Valley, Chicago
- West Coast interchange via UP and BNSF

# CSX Intermodal Terminals Savannah Footprint



- Dedicated Intermodal Terminal – carload commodities move through Southover Yard
- Steel Wheel Interchange to GPA Garden City Terminal

# CSX Intermodal Terminals Savannah Yard



- **27 developed acres**
- **655 parking slots**
- **Three processing tracks – 2,000’ each**
- **18 storage tracks – 72,000’ storage / switching capacity**
- **Two switch crews around the clock**

# CSX Intermodal Terminals Domestic



- Gate open 08:00-20:00, Monday – Saturday
- Lift operations 06:00-20:00 7 days
- Import driven – mostly empty containers in by rail, loads out

**2016 VOLUME APPROX. 45,000 CONTAINERS**

# CSX Intermodal Terminals International



- Dedicated Port Transfer from Savannah Yard to GPA's Garden City Terminal
- Largest single port facility in the United States
- On-dock rail services at Chatham Yard
- Cars are worked by GPA employees

**2016 VOLUME APPROX. 150,000 CONTAINERS**

*Thank you!*

**Questions?**